

"Your generosity has motivated me to work harder and remain focused as I hope to one day use my profession to give back to the community."

Cadean Daugherty
Class of 2016
Henryville, Pa.
PSECU Annual Scholarship



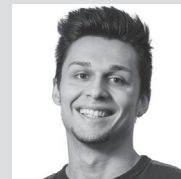
"After discussing with my husband the hardship I endured financing my education, we decided to establish our endowed scholarship. Through scholarship, we are able to give back to the institution that gave me so much and provide opportunity for deserving students to also reach their dreams and goals at ESU."

Gretchen Jackson '02
Creator of the Gretchen Fee Jackson '02
Communication Studies Endowed Scholarship



"When I graduate, I hope I can use what I have learned to make a difference in people's lives, the same way that you made a difference in mine. I certainly have so much more to learn and experience but I definitely look forward to doing so."

Karol Was
Class of 2017
Stroudsburg, Pa.
Weiler Family Foundation Annual Scholarship



"I chose to establish the Robert and Jean Prann Environmental Scholarship at ESU for two main reasons: first, to give back to the university and support future environmental scientists as they embark on their environmental education; and second, to honor my parents who paid for my education through their hard work and raised our family with a great appreciation for the outdoors and a sense of environmental awareness."

Ronald W. Prann, Ph.D., '84
Creator of the Robert and Jean Prann Environmental Sciences
Annual Scholarship

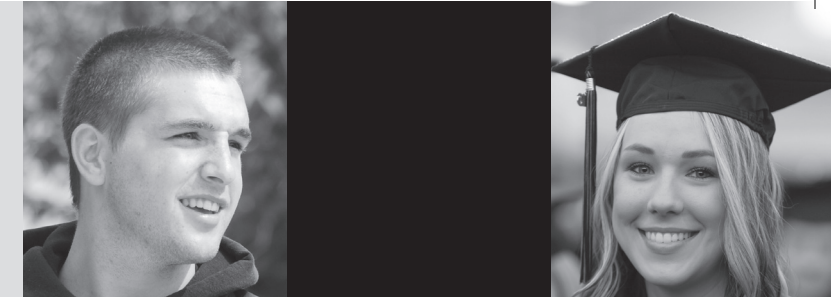


**EAST STROUDSBURG
UNIVERSITY
FOUNDATION**

Henry A. Ahnert, Jr. Alumni Center
200 Prospect Street
East Stroudsburg, Pa., 18301
570-422-3333 | 800-775-8975
www.esufoundation.org

OUR MISSION:

East Stroudsburg University
Foundation fosters lifelong
relationships with alumni and
friends of East Stroudsburg
University, securing
philanthropic support to
advance the University's
mission and to enhance every
student's University experience.



**WARRIOR
strong**
Student Scholarships



**EAST STROUDSBURG
UNIVERSITY
FOUNDATION**



THE NEED

As colleges and universities throughout Pennsylvania and across the country vie for the brightest students, financial aid and scholarship offerings are often the deciding factor in the college selection process. To keep East Stroudsburg University competitive, the ESU Foundation raises funds to create and build scholarships.

A scholarship award can be the deciding factor to bring deserving, determined students to East Stroudsburg University.



THE IMPACT

For more than three decades, alumni, regional corporations and foundations, faculty and staff, and friends in the community have stepped forward to create annual and endowed scholarship funds. A student with a scholarship award is more likely to finish four full years of undergraduate study to complete a degree. Today, a young person's lifetime earning potential – and the chance to move out of financial difficulty– multiplies dramatically with an undergraduate degree.

Annually, more than 500 scholarships are awarded to East Stroudsburg University students through the generosity of designated gifts to the ESU Foundation.



THE OPPORTUNITY

Scholarship funds are a smart philanthropic choice to both support ESU students and honor your own experience and interests. Funds can be established to support students in specific academic areas or extracurricular activities; or to recognize students who demonstrate professional goals that are important to you or that honor or memorialize a family member or friend.

Each year, donors have the chance to meet their scholarship recipient and hear personally how the award has enhanced and made the student's educational experience a possibility. It is a powerful moment of connection, creating bonds of gratitude that can last for many years.



THE OPTIONS

East Stroudsburg University Foundation offers a variety of levels and types of scholarship funds to meet your circumstances and philanthropic goals. Funds can be created for an annual scholarship or for an endowed scholarship that will remain in perpetuity forever. Scholarships may be created through direct gifts or arranged through a planned gift or bequest that will leave a special and lasting legacy at ESU.

A fully charitable act, creating a scholarship fund may have important tax benefits that can be reviewed with your financial planner.

